

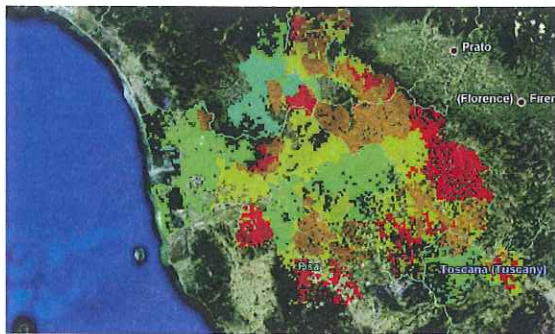


3rd European Water Conference
24-25 May 2012, Brussels

We should
WATERIZE SPATIAL PLANNING
to achieve real integration of water resources management

To “waterize” spatial planning means making water management a cross-cutting concern, integrating the protection and sustainable management of water throughout urban planning processes involving all policy areas at local and basin scale.

Reliable, updated information is needed to make knowledge-based decisions that incorporate long term analysis of drinking water management in urban spatial planning.



WIZ platform supports knowledge based decisions

This is achieved by creating a digital platform that allows seamless interchange of spatial planning and water-related data among local authorities involved in the process.

WIZ elaborations allow to incorporate actual data and projections of climate change impacts on water, drinking water management conditions, and economic analysis.



Encompass future drink water management conditions

WIZ is a framework for co-ordination and democratic decision and planning: it promotes awareness and fosters open, inclusive planning processes, enabling citizens to access all key information, like water availability.

www.wiz-life.eu

